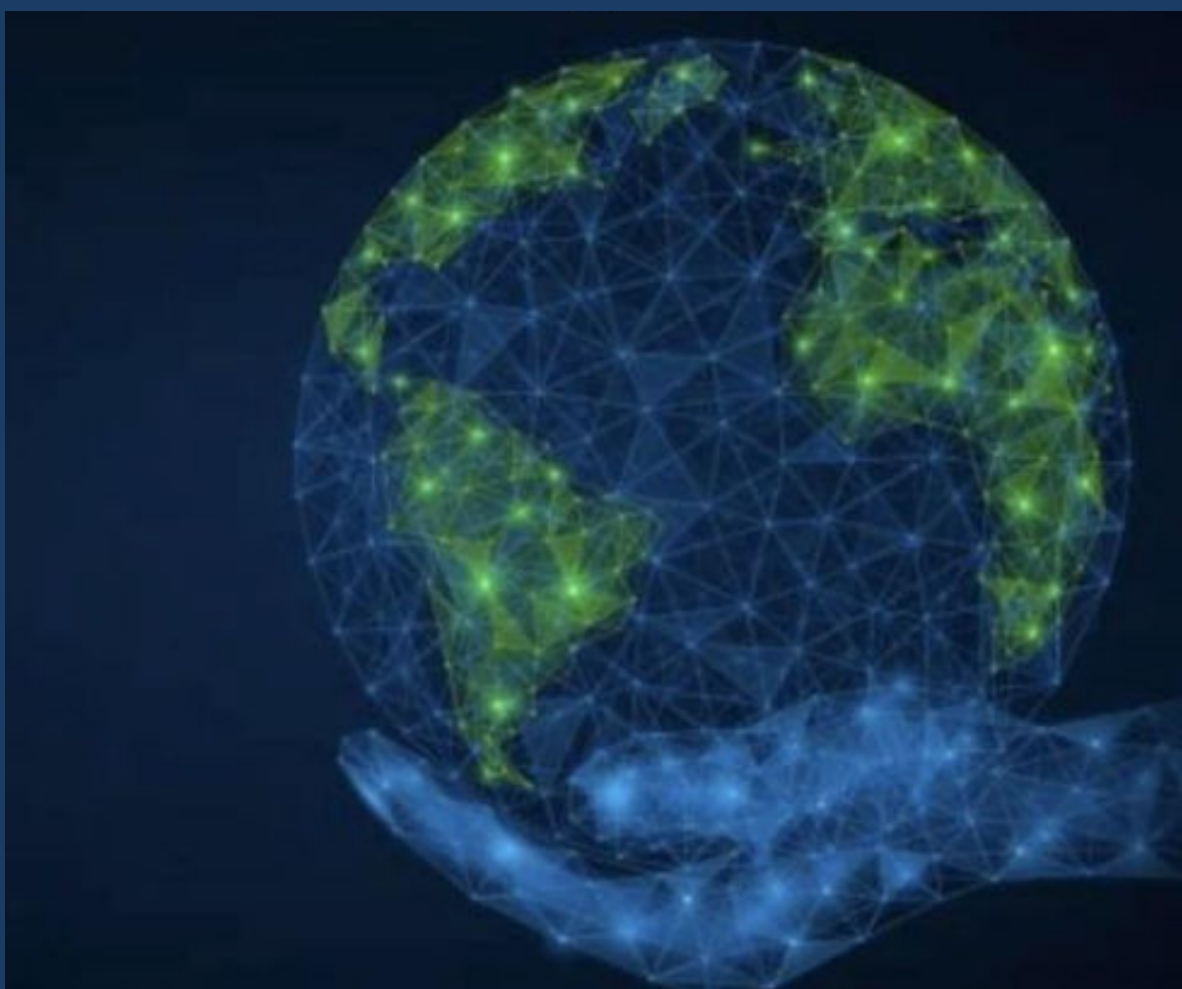


IS YOUR DATA READY FOR RE-COMMERCE?

THE TOP TEN DATA CONSIDERATIONS FOR RE-COMMERCE



1. Have you documented an authentication process with the ability to accurately tag and track each item?
2. Does product condition (e.g. excellent, good, fair) have a set grouping of standards to permit accurate attribution for each item?
3. Will you have a unique SKU for each item or create generic cluster SKUs for common groupings?
4. If unique SKUs are used, can like one-of-a-kind items be consolidated to a Parent Style to support analytics, fulfillment, and planning?
5. Is the original vendor style and production date information important to capture and does your data model support this need?
6. Have original colors and fabrications been mapped to a central standard for your organization?
7. Are HTS codes properly applied based on the original country of origin and the country from which you've now purchased the item?
8. Are original or current sizes captured and mapped to a standard common range? Are resources available to measure items to support this?
9. Are you able to capture and inventory all item components if an item originally came with parts or accessories? Can you identify if an item is absent?
10. If repairs are necessary, are you able to capture the repair details with attribution and assign the repair cost to the cost of the item?

